

CARE-AI SEED FUND

CALL FOR  
APPLICATIONS

---

**care-ai**

---

# ABOUT CARE-AI

The Centre for Advancing Responsible and Ethical Artificial Intelligence (CARE-AI) at the University of Guelph (U of G) integrates ethics, governance and social responsibility with technical leadership. Our researchers span from faculty across all Colleges on U of G's campus – working in one or more of the three core pillars: AI methodologies; AI applications; and AI responsibility.

**CARE-AI's mission** is to advance multidisciplinary AI training and research, and its responsible application to foster economic growth and improve life. CARE-AI expands our research community's expertise and fosters a network of over 90 researchers and scholars from across campus, as well as an external advisory board of thought leaders. Our researchers apply AI and machine learning to U of G strengths, including human and animal health, environmental sciences, agriculture, agri-food, business, insurance and the bio-economy. We also develop methodologies, including learning algorithms, human-computer interfaces, data analytics, sensors and robotics, while ensuring that these new platforms are safe and benefit humanity. Researchers at CARE-AI work collaboratively with inter-disciplinary departments, industry partners as well as other institutions to support CARE-AI's ecosystem.



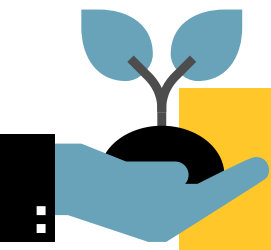
## AI INSPIRE GRANTS

**AI Inspire Grants** support workshops, events, hackathons or seminars that bring thought leaders in AI methodology, AI applications and/or AI responsibility to U of G. CARE-AI can assist in raising visibility and awareness of the initiative by circulating it through the CARE-AI community, and by funding up to \$1,500 of direct costs.



## AI INNOVATION GRANTS

**AI Innovation Grants** support the formation of interdisciplinary research collaborations that have the potential to achieve recognition on the national or international stage. CARE-AI will provide up to \$5,000 per year for up to 2 years to support the direct costs of research. These grants are intended to spearhead new research initiatives by helping to fund the development of a prototype, feasibility study or research sprint. Leveraging other sources of funding is encouraged.



# AI INNOVATION GRANTS

CARE-AI's AI Innovation Grants support the formation of interdisciplinary research collaborations (broadly construed to include projects led by, for example, researchers in the social sciences or humanities) that have the potential to achieve national or international recognition for research. These grants are intended to spearhead new research initiatives. Leveraging other sources of funding is encouraged. The research projects are in the areas of AI methodology, AI applications or AI responsibility to U of G. The research and project initiatives must be led by University of Guelph faculty but can involve internal and external collaborators.

Applicants are encouraged to include a description of anticipated in-kind support in their submission.

CARE-AI awards are up to \$5,000 per year for up to 2 years for the direct costs of research.

Please note that indirect costs are ineligible under this program (indirect cost rate of 0%).

## ELIGIBILITY

Applicants must be full-time continuing faculty members or other academic staff at U of G and be eligible to hold Tri-Agency grants. If you have any questions about the U of G's Eligibility for Research policy, please contact the Research Office.

There will be one applicant and any number of collaborators on each application. It is intended that the grant applicant be the principal investigator.

A grant applicant may only win one award per competition (up to \$5,000 per year for up to 2 years). An individual may apply as the primary applicant for one application per competition. However, the individual can be a collaborator in other applications within a competition.

Applicants should be CARE-AI Affiliated Faculty, but collaborators do not have to be affiliated with CARE-AI.

Funds must have a direct on-campus benefit and not be used to support expenses at other institutions (e.g. stipends for Non-UofG students)

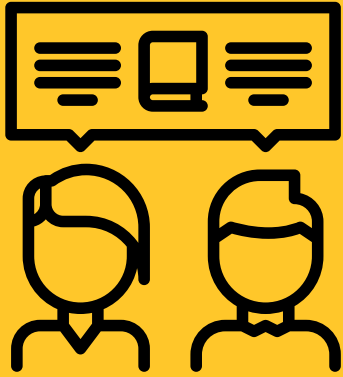
Applications need to address IEDI related considerations and processes.

## DEADLINES

February 16, 2023 Open to applications

April 28, 2023 All applications must be received electronically by 5 pm EST

Applicants should receive notice of their application status within 4-6 weeks from deadline.



## REVIEW PROCESS

Applications will be reviewed by our Review Committee. After the deadline, applicants will be contacted within 4-6 weeks. Grants are adjudicated by an inter-disciplinary Review Committee and should be written in plain language.

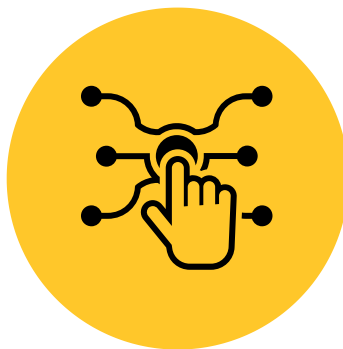
The Review Committee will be formed once all applications are received. A Co-Academic Director, CARE-AI will Chair the Committee, however, have no vote or input in the review process. The Review Committee will be comprised of internal faculty and staff that have no conflict of interest.



## EVALUATION CRITERIA

The Review Committee will only evaluate applications that include all the required components and meet eligibility as described above. The Review Committee will consider the following criteria:

- Relevance to the mission of CARE-AI addressing responsible and ethical AI concerns ;
- Bringing together inter-disciplinary U of G faculty teams;
- A clear description of the requested funds (financial budget);
- The importance of the AI Innovation Grant to the project.



## HOW TO APPLY

**Step 1:** Fill out the CARE-AI SEED Funding Application Form (see attached)

**Step 2:** Compile the Supplementary Documentation (as outlined in CARE-AI SEED Funding Application Form)

**Step 3:** Combine Step 1-2 into a single PDF document and email your application directly to care-ai@uoguelph.ca with the subject line as CARE-AI SEED Funding Application.

**More Information and Resources** Please do not hesitate to contact us directly at care-ai@uoguelph.ca should you have any further questions.



## REPORTING DOCUMENTS

Recipients will be required to submit a report at the end of each year (first and final year) of the award to provide a brief summary and overview of the research outcomes from the AI Innovation award. A 10 % holdback will be kept until all final reporting documents are submitted.

## ACKNOWLEDGMENT OF SUPPORT

Successful applicants are expected to acknowledge CARE-AI in all public announcements, presentations or publications related to the research project.